

February 2, 2021

NO OBJECTION LETTER

To: Daniel Keester-O'Mills, Principal Planner, Development Services Department

From: Ann DeVeaux
KEITH
301 East Atlantic Blvd
Pompano Beach, Florida 33060
adeveaux@keithteam.com
954.788.3400

RE: Petitioner/Owner Intends to Vacate Right of Way, per page 1469 of O.R.B. 45382, PG. 1469 in the southwestern corner of the parcel, (see attached survey & aerial) found within the City of Pompano.

Subject Property Address: 700 Block of N Dixie Highway Pompano Beach, FL 33309

Folio Number: 484235110070

The Petitioner/Owner intends to submit a ROW Vacation Application to the City of Pompano Beach and Broward County Board of County Commissioners for the above referenced property to vacate a portion of unimproved right-of-way.

Please complete the following, and return the signed and dated form to the Petitioner/Contact person reference above.

1. X We have no objection to the vacation.
2. We have no objection to the vacation if the following is satisfied:
3. We have objection as follows: _____

Attachments:

- Aerial
- Survey



Signature

Principal Planner _____
Title

Daniel T. Keester-O'Mills
Printed name

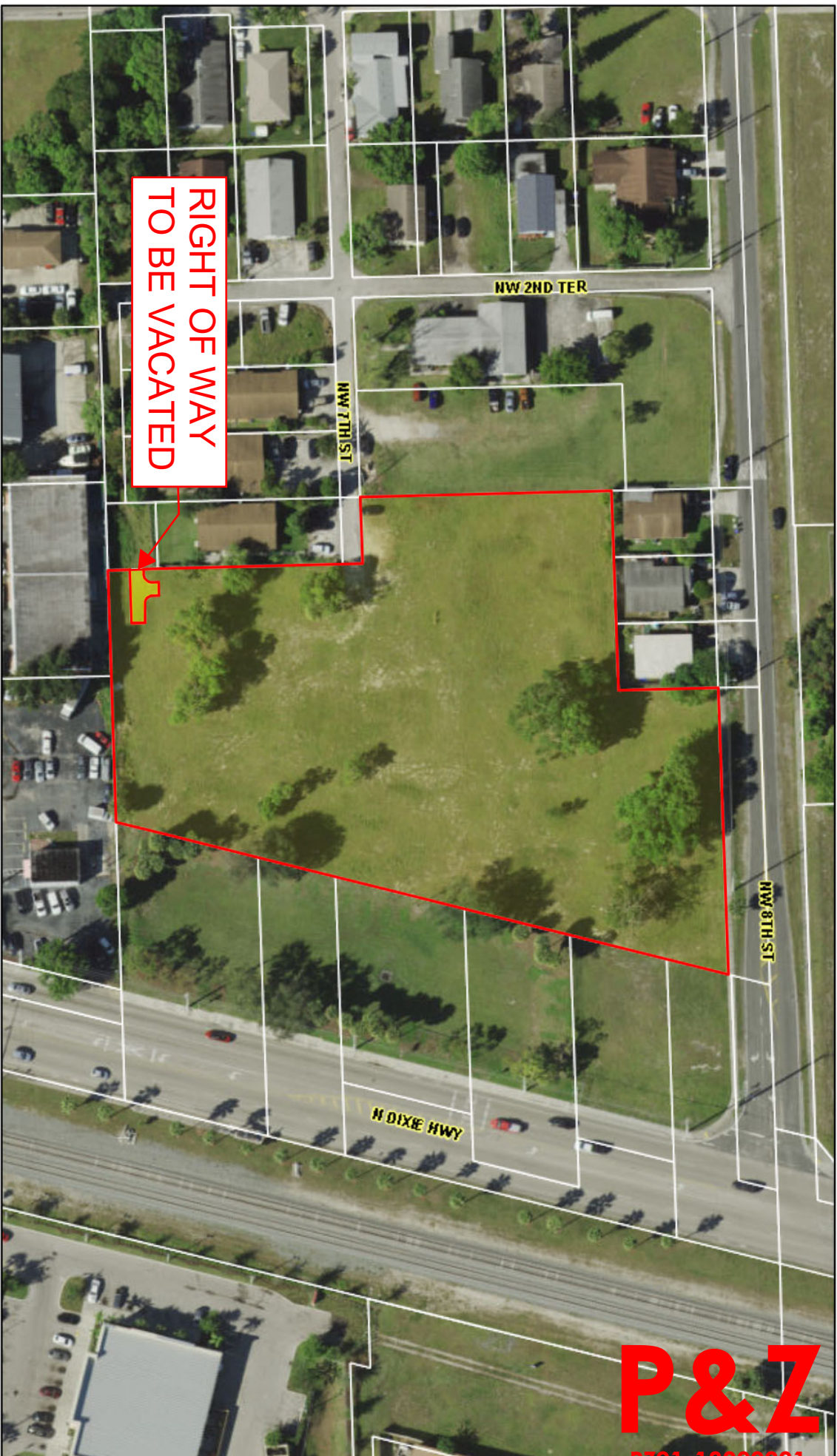
100 W Atlantic Blvd, Pompano Beach, FL 33060
Address

954-786-5541
Phone Number

daniel.keester@copbfl.com
Email Address

Property Id: 484235110070

**Please see map disclaimer



P&Z
PZ21-18000001
4/28/2021

January 27, 2021

1:1,200
0 55 110 220 ft
0 15 30 60 m

Flight Date : Between Dec 15, 2019 and Jan 26, 2020 Broward County Property Appraiser

Tree Table:

Tree Number	Tree Name	Diameter in Inches	Canopy in Feet	Tree Number	Tree Name	Diameter in Inches	Canopy in Feet	Tree Name	Diameter in Inches	Canopy in Feet
5241	Palm	12	10	6447	Ficus	7	18	Pine	6	8
5242	Palm	12	12	6448	Palm	11	12	6468	Pine	5
5243	Palm	14	12	6449	Palm	10	14	6489	Palm	9
5244	Palm	12	10	6450	Palm	10	12	6490	Palm	10
5245	Palm	12	12	6451	Palm	9	12	6491	Palm	10
5246	Palm	10	10	6452	Palm	10	12	6492	Palm	10
5247	Oak	15	20	6453	Palm	10	14	6493	Palm	12
5248	Oak	18	20	6454	Palm	10	14	6494	Palm	12
5249	Oak	24	40	6455	Palm	10	14	6495	Palm	13
5250	Oak	18	50	6456	Palm	13	14	6496	Palm	10
5251	Mango	10	20	6457	Pine	4	6	6500	Palm	10
5252	Mango	12	15	6458	Pine	7	15	6501	Palm	12
5253	Mango	12	15	6459	Pine	4	6	6502	Palm	12
5254	Mango	18	30	6460	Oak	16	40	6503	Oak	15
5255	Black Olive	24	50	6461	Oak	22	50	6504	Pine	5
5256	Palm	13	12	6462	Palm	14	12	6505	Pine	4
5257	Palm	10	10	6463	Palm	12	12	6506	Pine	5
5258	Palm	10	6	6464	Avocado	6	12	6507	Pine	6
5259	Palm	10	6	6465	Avocado	6	12	6508	Pine	7
5260	Unknown	12	20	6466	Ficus	4	10	6509	Pine	7
5261	Unknown	10	8	6467	Mango	18	25	6509	Pine	7
5262	Unknown	8	12	6468	Mango	10	12	6510	Pine	7
5263	Poinciana	20	50	6469	Oak	8	15	6511	Pine	4
5264	Unknown	8	15	6470	Oak	16	40	6512	Pine	10
5265	Unknown	10	13	6471	Oak	10	12	6513	Pine	5
5266	Unknown	10	10	6472	Palm	10	10	6514	Pine	8
5267	Ficus	96	60	6473	Palm	12	14	6515	Mango	36
5268	Mango	28	40	6474	Palm	12	14	6516	Mango	10
5269	Unknown	10	15	6475	Palm	10	12	6517	Mango	10
5270	Unknown	20	30	6476	Palm	10	12	6518	Mango	10
5271	Schefflera	6	15	6477	Pine	7	12	6519	Mango	18
5272	Unknown	30	30	6478	Pine	3	6	6520	Mango	8
5273	Unknown	24	30	6479	Pine	8	20	6521	Mango	6
5274	Mango	24	35	6480	Pine	8	20	6522	Mango	12
5275	Unknown	15	15	6481	Pine	10	30	6523	Mango	3
5276	Palm	15	15	6482	Pine	8	20	6524	Mango	30
5277	Ficus	84	85	6483	Pine	4	6	6525	Tabularia	3
5278	Ficus	5	10	6484	Pine	4	8	6526	Unknown	10
5279	Ficus	35	35	6485	Pine	7	15	6527	Unknown	4
5280	Ficus	18	35	6486	Pine	7	15	6528	Unknown	4

LEGAL DESCRIPTION:

[illegible][illegible]

SECTION 14. THAT THE SUBDIVISION OF SECTION 34, TOWNSHIP 48 SOUTH, RANGE 6 EAST, ACCORDING TO THE PLAT THEREOF AS THE SAME APPEARS ON THE PLAT OF THE PUBLIC RECORDS OF THE COUNTY OF SIOUX, IOWA, BEING THE PLAT OF THE PUBLIC RECORDS OF BROWN COUNTY, IOWA, SAID PORTION BEING MORE PARTICULARLY DESCRIBED AS FOLLOWS:

[illegible]

LEGEND:

PARMOUNT TITLE SERVICES, INC., SEARCH NUMBER 203817-4, DATED MAY 14, 2020 @ 11:00 PM.

[illegible][illegible]

11. THE EXPECTED VERTICAL ACCURACY OF THE INFORMATION SHOWN HEREON IS AS FOLLOWS: FOR HARD SURFACE ELEVATIONS, ± 0.07 METER; FOR SOFT SURFACE ELEVATIONS, ± 0.15 METER.

1. THE FLOODING DISPLAY SCALE FOR THIS SUBJECT IS 16-20 OR SMALLER.
2. THE SUBJECT DID NOT DENY THE LIMITS OR EXTENTS OF POTENTIAL JURISDICTIONAL BOUNDARIES.
3. ACCORDING TO THE NATIONAL FLOOD INSURANCE PROGRAM, THE FLOOD INFORMATION ON PAGES 10, 12, 13, 15, 16, 17, 18, 19, 20, 21, 22, 23, 24, 25, 26, 27, 28, 29, 30, 31, 32, 33, 34, 35, 36, 37, 38, 39, 40, 41, 42, 43, 44, 45, 46, 47, 48, 49, 50, 51, 52, 53, 54, 55, 56, 57, 58, 59, 60, 61, 62, 63, 64, 65, 66, 67, 68, 69, 70, 71, 72, 73, 74, 75, 76, 77, 78, 79, 80, 81, 82, 83, 84, 85, 86, 87, 88, 89, 90, 91, 92, 93, 94, 95, 96, 97, 98, 99, 100, 101, 102, 103, 104, 105, 106, 107, 108, 109, 110, 111, 112, 113, 114, 115, 116, 117, 118, 119, 120, 121, 122, 123, 124, 125, 126, 127, 128, 129, 130, 131, 132, 133, 134, 135, 136, 137, 138, 139, 140, 141, 142, 143, 144, 145, 146, 147, 148, 149, 150, 151, 152, 153, 154, 155, 156, 157, 158, 159, 160, 161, 162, 163, 164, 165, 166, 167, 168, 169, 170, 171, 172, 173, 174, 175, 176, 177, 178, 179, 180, 181, 182, 183, 184, 185, 186, 187, 188, 189, 190, 191, 192, 193, 194, 195, 196, 197, 198, 199, 200, 201, 202, 203, 204, 205, 206, 207, 208, 209, 210, 211, 212, 213, 214, 215, 216, 217, 218, 219, 220, 221, 222, 223, 224, 225, 226, 227, 228, 229, 230, 231, 232, 233, 234, 235, 236, 237, 238, 239, 240, 241, 242, 243, 244, 245, 246, 247, 248, 249, 250, 251, 252, 253, 254, 255, 256, 257, 258, 259, 260, 261, 262, 263, 264, 265, 266, 267, 268, 269, 270, 271, 272, 273, 274, 275, 276, 277, 278, 279, 280, 281, 282, 283, 284, 285, 286, 287, 288, 289, 290, 291, 292, 293, 294, 295, 296, 297, 298, 299, 300, 301, 302, 303, 304, 305, 306, 307, 308, 309, 310, 311, 312, 313, 314, 315, 316, 317, 318, 319, 320, 321, 322, 323, 324, 325, 326, 327, 328, 329, 330, 331, 332, 333, 334, 335, 336, 337, 338, 339, 340, 341, 342, 343, 344, 345, 346, 347, 348, 349, 350, 351, 352, 353, 354, 355, 356, 357, 358, 359, 360, 361, 362, 363, 364, 365, 366, 367, 368, 369, 370, 371, 372, 373, 374, 375, 376, 377, 378, 379, 380, 381, 382, 383, 384, 385, 386, 387, 388, 389, 390, 391, 392, 393, 394, 395, 396, 397, 398, 399, 400, 401, 402, 403, 404, 405, 406, 407, 408, 409, 410, 411, 412, 413, 414, 415, 416, 417, 418, 419, 420, 421, 422, 423, 424, 425, 426, 427, 428, 429, 430, 431, 432, 433, 434, 435, 436, 437, 438, 439, 440, 441, 442, 443, 444, 445, 446, 447, 448, 449, 450, 451, 452, 453, 454, 455, 456, 457, 458, 459, 460, 461, 462, 463, 464, 465, 466, 467, 468, 469, 470, 471, 472, 473, 474, 475, 476, 477, 478, 479, 480, 481, 482, 483, 484, 485, 486, 487, 488, 489, 490, 491, 492, 493, 494, 495, 496, 497, 498, 499, 500, 501, 502, 503, 504, 505, 506, 507, 508, 509, 510, 511, 512, 513, 514, 515, 516, 517, 518, 519, 520, 521, 522, 523, 524, 525, 526, 527, 528, 529, 530, 531, 532, 533, 534, 535, 536, 537, 538, 539, 540, 541, 542, 543, 544, 545, 546, 547, 548, 549, 550, 551, 552, 553, 554, 555, 556, 557, 558, 559, 560, 561, 562, 563, 564, 565, 566, 567, 568, 569, 570, 571, 572, 573, 574, 575, 576, 577, 578, 579, 580, 581, 582, 583, 584, 585, 586, 587, 588, 589, 590, 591, 592, 593, 594, 595, 596, 597, 598, 599, 600, 601, 602, 603, 604, 605, 606, 607, 608, 609, 610, 611, 612, 613, 614, 615, 616, 617, 618, 619, 620, 621, 622, 623, 624, 625, 626, 627, 628, 629, 630, 631, 632, 633, 634, 635, 636, 637, 638, 639, 640, 641, 642, 643, 644, 645, 646, 647, 648, 649, 650, 651, 652, 653, 654, 655, 656, 657, 658, 659, 660, 661, 662, 663, 664, 665, 666, 667, 668, 669, 670, 671, 672, 673, 674, 675, 676, 677, 678, 679, 680, 681, 682, 683, 684, 685, 686, 687, 688, 689, 690, 691, 692, 693, 694, 695, 696, 697, 698, 699, 700, 701, 702, 703, 704, 705, 706, 707, 708, 709, 710, 711, 712, 713, 714, 715, 716, 717, 718, 719, 720, 721, 722, 723, 724, 725, 726, 727, 728, 729, 730, 731, 732, 733, 734, 735, 736, 737, 738, 739, 740, 741, 742, 743, 744, 745, 746, 747, 748, 749, 750, 751, 752, 753, 754, 755, 756, 757, 758, 759, 760, 761, 762, 763, 764, 765, 766, 767, 768, 769, 770, 771, 772, 773, 774, 775, 776, 777, 778, 779, 780, 781, 782, 783, 784, 785, 786, 787, 788, 789, 790, 791, 792, 793, 794, 795, 796, 797, 798, 799, 800, 801, 802, 803, 804, 805, 806, 807, 808, 809, 810, 811, 812, 813, 814, 815, 816, 817, 818, 819, 820, 821, 822, 823, 824, 825, 826, 827, 828, 829, 83

[illegible]

LOCATION SKETCH

NOT TO SCALE

THIS SURVEY

THIS SURVEY

NORTH STREET

NORTH AVENUE

NORTH WEST AVENUE

W. 1ST ST.

W. 2ND ST.

W. 3RD ST.

W. 4TH ST.

W. 5TH ST.

W. 6TH ST.

W. 7TH ST.

W. 8TH ST.

W. 9TH ST.

W. 10TH ST.

W. 11TH ST.

W. 12TH ST.

W. 13TH ST.

W. 14TH ST.

W. 15TH ST.

W. 16TH ST.

W. 17TH ST.

W. 18TH ST.

W. 19TH ST.

W. 20TH ST.

W. 21ST ST.

W. 22ND ST.

W. 23RD ST.

W. 24TH ST.

W. 25TH ST.

W. 26TH ST.

W. 27TH ST.

W. 28TH ST.

W. 29TH ST.

W. 30TH ST.

W. 31ST ST.

W. 32ND ST.

W. 33RD ST.

W. 34TH ST.

W. 35TH ST.

W. 36TH ST.

W. 37TH ST.

W. 38TH ST.

W. 39TH ST.

W. 40TH ST.

W. 41ST ST.

W. 42ND ST.

W. 43RD ST.

W. 44TH ST.

W. 45TH ST.

W. 46TH ST.

W. 47TH ST.

W. 48TH ST.

W. 49TH ST.

W. 50TH ST.

W. 51ST ST.

W. 52ND ST.

W. 53RD ST.

W. 54TH ST.

W. 55TH ST.

W. 56TH ST.

W. 57TH ST.

W. 58TH ST.

W. 59TH ST.

W. 60TH ST.

W. 61ST ST.

W. 62ND ST.

W. 63RD ST.

W. 64TH ST.

W. 65TH ST.

W. 66TH ST.

W. 67TH ST.

W. 68TH ST.

W. 69TH ST.

W. 70TH ST.

W. 71ST ST.

W. 72ND ST.

W. 73RD ST.

W. 74TH ST.

W. 75TH ST.

W. 76TH ST.

W. 77TH ST.

W. 78TH ST.

W. 79TH ST.

W. 80TH ST.

W. 81ST ST.

W. 82ND ST.

W. 83RD ST.

W. 84TH ST.

W. 85TH ST.

W. 86TH ST.

W. 87TH ST.

W. 88TH ST.

W. 89TH ST.

W. 90TH ST.

W. 91ST ST.

W. 92ND ST.

W. 93RD ST.

W. 94TH ST.

W. 95TH ST.

W. 96TH ST.

W. 97TH ST.

W. 98TH ST.

W. 99TH ST.

W. 100TH ST.

W. 101ST ST.

W. 102ND ST.

W. 103RD ST.

W. 104TH ST.

W. 105TH ST.

W. 106TH ST.

W. 107TH ST.

W. 108TH ST.

W. 109TH ST.

W. 110TH ST.

W. 111ST ST.

W. 112ND ST.

W. 113RD ST.

W. 114TH ST.

W. 115TH ST.

W. 116TH ST.

W. 117TH ST.

W. 118TH ST.

W. 119TH ST.

W. 120TH ST.

W. 121ST ST.

W. 122ND ST.

W. 123RD ST.

W. 124TH ST.

W. 125TH ST.

W. 126TH ST.

W. 127TH ST.

W. 128TH ST.

W. 129TH ST.

W. 130TH ST.

W. 131ST ST.

W. 132ND ST.

W. 133RD ST.

W. 134TH ST.

W. 135TH ST.

W. 136TH ST.

W. 137TH ST.

W. 138TH ST.

W. 139TH ST.

W. 140TH ST.

W. 141ST ST.

W. 142ND ST.

W. 143RD ST.

W. 144TH ST.

W. 145TH ST.

W. 146TH ST.

W. 147TH ST.

W. 148TH ST.

W. 149TH ST.

W. 150TH ST.

W. 151ST ST.

W. 152ND ST.

W. 153RD ST.

W. 154TH ST.

W. 155TH ST.

W. 156TH ST.

W. 157TH ST.

W. 158TH ST.

W. 159TH ST.

W. 160TH ST.

W. 161ST ST.

W. 162ND ST.

W. 163RD ST.

W. 164TH ST.

W. 165TH ST.

W. 166TH ST.

W. 167TH ST.

W. 168TH ST.

W. 169TH ST.

W. 170TH ST.

W. 171ST ST.

W. 172ND ST.

W. 173RD ST.

W. 174TH ST.

W. 175TH ST.

W. 176TH ST.

W. 177TH ST.

W. 178TH ST.

W. 179TH ST.

W. 180TH ST.

W. 181ST ST.

W. 182ND ST.

W. 183RD ST.

W. 184TH ST.

W. 185TH ST.

W. 186TH ST.

W. 187TH ST.

W. 188TH ST.

W. 189TH ST.

W. 190TH ST.

W. 191ST ST.

W. 192ND ST.

W. 193RD ST.

W. 194TH ST.

W. 195TH ST.

W. 196TH ST.

W. 197TH ST.

W. 198TH ST.

W. 199TH ST.

W. 200TH ST.

W. 201ST ST.

W. 202ND ST.

W. 203RD ST.

W. 204TH ST.

W. 205TH ST.

W. 206TH ST.

W. 207TH ST.

W. 208TH ST.

W. 209TH ST.

W. 210TH ST.

W. 211ST ST.

W. 212ND ST.

W. 213RD ST.

W. 214TH ST.

W. 215TH ST.

W. 216TH ST.

W. 217TH ST.

W. 218TH ST.

W. 219TH ST.

W. 220TH ST.

W. 221ST ST.

W. 222ND ST.

W. 223RD ST.

W. 224TH ST.

W. 225TH ST.

W. 226TH ST.

W. 227TH ST.

W. 228TH ST.

W. 229TH ST.

W. 230TH ST.

W. 231ST ST.

W. 232ND ST.

W. 233RD ST.

W. 234TH ST.

W. 235TH ST.

W. 236TH ST.

W. 237TH ST.

W. 238TH ST.

W. 239TH ST.

W. 240TH ST.

W. 241ST ST.

W. 242ND ST.

W. 243RD ST.

W. 244TH ST.

W. 245TH ST.

W. 246TH ST.

W. 247TH ST.

W. 248TH ST.

W. 249TH ST.

W. 250TH ST.

W. 251ST ST.

W. 252ND ST.

W. 253RD ST.

W. 254TH ST.

W. 255TH ST.

W. 256TH ST.

W. 257TH ST.

W. 258TH ST.

W. 259TH ST.

W. 260TH ST.

W. 261ST ST.

W. 262ND ST.

W. 263RD ST.

W. 264TH ST.

W. 265TH ST.

W. 266TH ST.

W. 267TH ST.

W. 268TH ST.

W. 269TH ST.

W. 270TH ST.

W. 271ST ST.

W. 272ND ST.

W. 273RD ST.

W. 274TH ST.

W. 275TH ST.

W. 276TH ST.

W. 277TH ST.

W. 278TH ST.

W. 279TH ST.

W. 280TH ST.

W. 281ST ST.

W. 282ND ST.

W. 283RD ST.

W. 284TH ST.

W. 285TH ST.

W. 286TH ST.

W. 287TH ST.

W. 288TH ST.

W. 289TH ST.

W. 290TH ST.

W. 29

PARMOUNT TITLE SERVICES, INC., SEARCH NUMBER 20817-4, DATED MAY 14, 2020 @ 1:00 PM.

6. BEARINGS SHOWN HEREON ARE ASSUMED HAVING A REFERENCE BEARING OF NORTH 187°56'12" EAST ALONG THE NORTH LINE OF THE SECTION ONE QUARTER SEC. 10 OF SECTION 33, TOWNSHIP 48 SOUTH, RANGE 42 EAST.

7. THIS SURVEY MEETS THE RELATIVE SIZE ACCURACY OF 1 FOOT IN 10,000 FEET. THE ACCURACY WAS OBTAINED BY REDUNDANT MEASUREMENTS AND CALCULATION OF A CLOSED GEOMETRIC POLYGON.

8. THE OWNERSHIP OF FENCES, PERIMETER WALLS AND/OR HEXAGES SHOWN HEREON ARE NOT KNOWN AND THIS ARE NOT LISTED AS ENCUMBRANCES.

[illegible]

11. THE EXPECTED VERTICAL ACCURACY OF THE INFORMATION SHOWN HEREON IS $\pm 0.03'$ FOR HARD SURFACE ELEVATIONS AND $0.1'$ FOR SOFT SURFACE ELEVATIONS.

1. THE HORIZONTAL SCALE FOR THIS SURVEY IS 6 IN. = 200' SMALLER.
2. THE SURVEY DOES NOT IDENTIFY THE LIMITS OR EXTENTS OF POTENTIAL JURISDICTION BOUNDARIES.
3. COMMENTS TO FLOOD ZONE ELEVATIONS: FLOOD ZONE ELEVATIONS WERE DETERMINED FROM AN INLAND TIDE GAUGE STATION, 15.00 FEET ABOVE MEAN LOW WATER, AND A SURFACE WATER ELEVATION OF 15.00 FEET ABOVE MEAN LOW WATER. THE FLOOD ZONE ELEVATIONS WERE DETERMINED BY ADDING THE FLOOD ZONE ELEVATION TO THE SURFACE WATER ELEVATION. FLOOD ZONE ELEVATIONS WERE DETERMINED BY ADDING THE FLOOD ZONE ELEVATION TO THE SURFACE WATER ELEVATION.
4. THE PROPERTY LINES WERE DETERMINED BY THE SURVEYOR. THE SURVEYOR HAS DETERMINED THE FLOOD ZONE ELEVATIONS WERE DETERMINED BY ADDING THE FLOOD ZONE ELEVATION TO THE SURFACE WATER ELEVATION.
5. ALL MAPPED FEATURES AND ELEVATIONS SHOWN HEREON WERE OBTAINED BY KERH AND ASSOCIATES FOR THE PURPOSE OF THIS SURVEY.

[illegible]

DATE		09/14/2020
SCALE		1"=20'
FIELD BOOK		696
DRAWN BY		DDB
CHECKED BY		MMM

DATE		09/14/2020
SCALE		1"=20'
FIELD BOOK		696
DRAWN BY		DDB
CHECKED BY		MMM

30
OM
MAIL

JUNE 20 8 17 A DATED MAY 14 2020 @ 11:00 PM.

ED HAVING A REFERENCE BEARING OF NORTH 87°56'12" EAST ALONG THE NORTH LINE OF THE
TOWNSHIP 48 SOUTH RANGE 42 EAST.

[illegible]

IF THE INFORMATION SHOWN HEREON IS $\pm 0.03'$ FOR HARD SURFACE ELEVATIONS AND $0.1'$ FOR

[illegible]

SHEET _____ OF _____
 LOTS 1 & 2 FIRST ADDITION
 BOULEVARD

10961.01

10447 (Imp. W. 2002-24Apr)

<div style="border: 1px solid black; padding: 5px; margin-bottom: 5px;"> <div style="display: flex; justify-content: space-between;"> <div>DATE</div> <div>REVISION</div> </div> <table border="1" style="width: 100%; border-collapse: collapse;"> <tr><td> </td><td> </td></tr> <tr><td> </td><td> </td></tr> <tr><td> </td><td> </td></tr> <tr><td> </td><td> </td></tr> <tr><td> </td><td> </td></tr> <tr><td> </td><td> </td></tr> <tr><td> </td><td> </td></tr> <tr><td> </td><td> </td></tr> <tr><td> </td><td> </td></tr> <tr><td> </td><td> </td></tr> </table> </div>																					<div style="border: 1px solid black; padding: 5px; margin-bottom: 5px;"> DATE: 09/14/2020 </div>	<div style="border: 1px solid black; padding: 5px; margin-bottom: 5px;"> SCALE: 1"=20' </div>	<div style="border: 1px solid black; padding: 5px; margin-bottom: 5px;"> FIELD BOOK: 696 </div>
<div style="border: 1px solid black; padding: 5px; margin-bottom: 5px;"> DRAWN BY: DOB </div>	<div style="border: 1px solid black; padding: 5px; margin-bottom: 5px;"> CHECKED BY: MMM </div>	<div style="border: 1px solid black; padding: 5px;"> <div style="display: flex; justify-content: space-between;"> <div> 6640 766-5400 33060-6643 FLORIDA EAST ATLANTIC BOULEVARD BEACH, </div> <div> LB NO. 6660 @KEITHHeam.com </div> </div> </div>																					

THE
ST

PHIC SURVEY

GRA

SECONDARY & TOPO

SHEET 1 OF 5

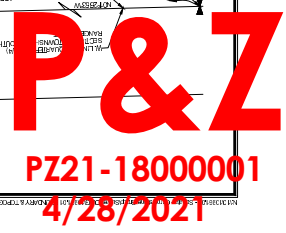
LOTS 1, 2, 3
FIRST ADDITION
ONE-QUARTER

Boulevard

10961.01
SHEET 10 of 10, 2020-2-2pm

LOTS 1, 2, 3, 6, THRU 12 & EAST 1/2 OF LOT 13, SUMPTERS ADDITION TO POMPANO THE FIRST ADDITION, PLAT BOOK 10 PAGE 67, B.C.R. AND A PORTION OF THE NORTHEAST ONE-QUARTER NE 1/4) OF SECTION 35, TOWNSHIP 48 SOUTH, RANGE 42 EAST, CITY OF POMPANO BEACH, BROWARD COUNTY, FLORIDA

301 EAST ATLANTIC BOULEVARD
POMPANO BEACH, FLORIDA 33060-6643
(954) 788-3400
EMAIL: mail@KEITHteam.com LB NO. 6860

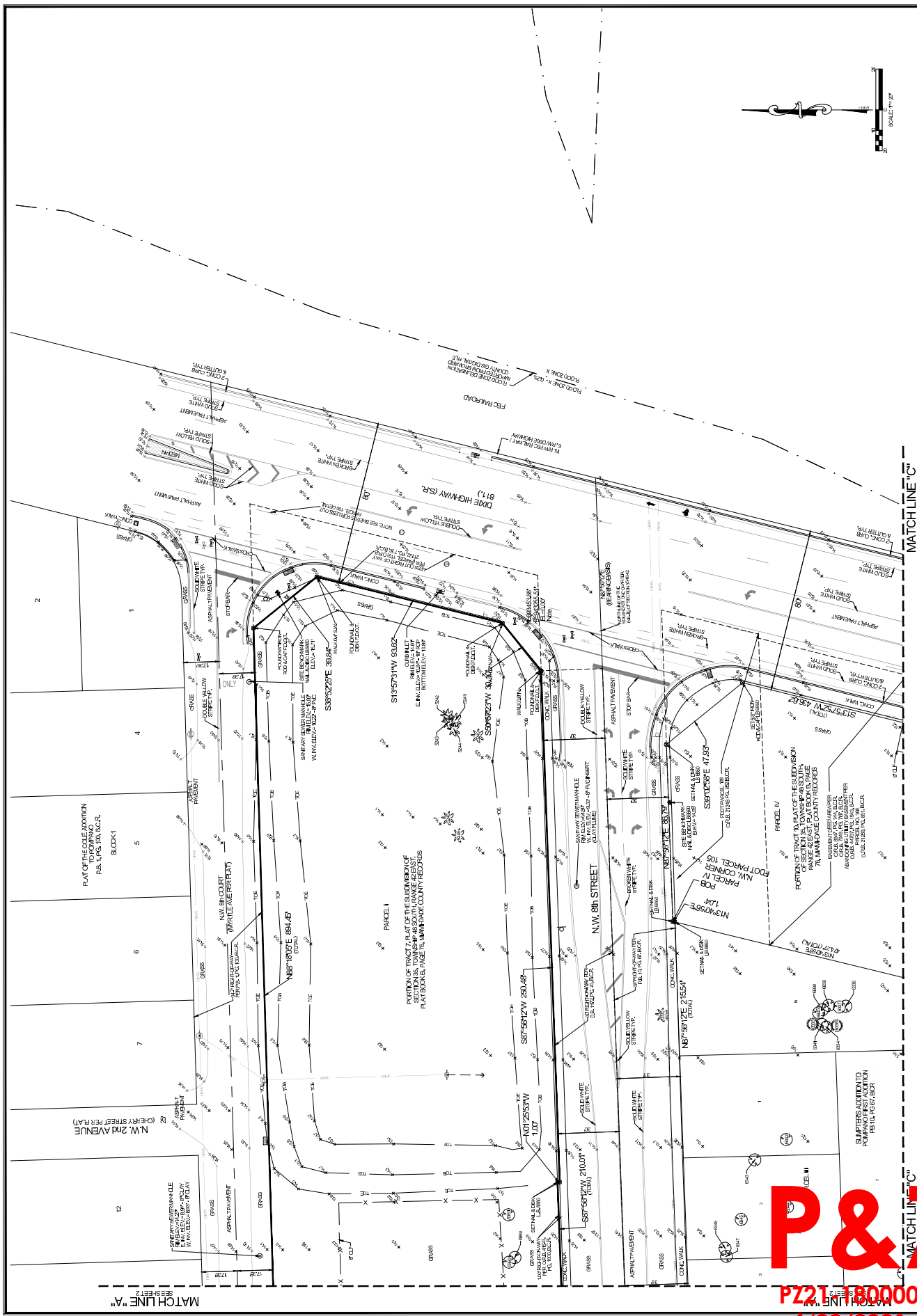
[illegible]

LOTS 1, 2, 3, 6, THRU 12 & EAST 1/2 OF LOT 13, SW/4TH'S ADDITION TO POMPANO THE FIRST ADDITION, PLAT BOOK 67, B.C.R. AND A PORTION OF THE NORTHEAST ONE-QUARTER (NE 1/4) OF SECTION 35, TOWNSHIP 48 SOUTH, RANGE 42 EAST, CITY OF POMPANO BEACH, BROWARD COUNTY, FLORIDA

EMAIL: mail@KEITHteam.com LB NO. 6860

MMMM	CHECKED BY
------	------------

DATE	REVISION	BY



P&Z

PZ21-8000001

4/28/2021

MATCH LINE
SEE SHEET

UNIT HOUSE

DATE	09/14/2020
SCALE	1"=20'
FIELD BOOK	896
DRAWN BY	DBB
CHECKED BY	MM
DATE	
REVISION	
BY	



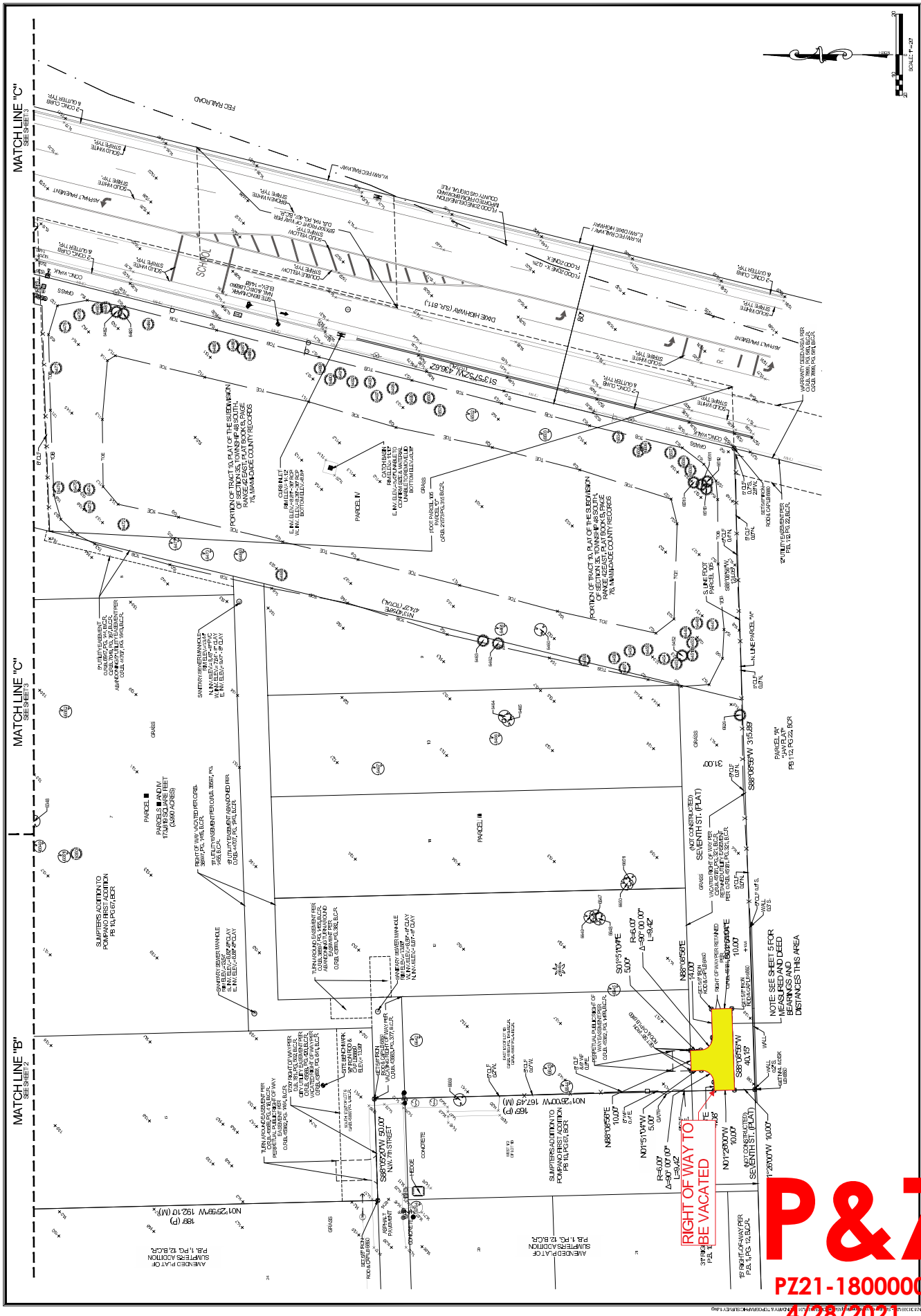
 301 EAST ATLANTIC BOULEVARD
 POMPANO BEACH, FLORIDA 33060-6643
 (954) 788-3400
 EMAIL: mail@keithteam.com LB NO. 6860

BOUNDARY & TOPOGRAPHIC SURVEY

SHEET
4
OF
5

PROJECT NUMBER
10961.01

SHEET 4 OF 5
 PROJECT NUMBER
 10961.01



P&Z
 PZ21-1800001
 4/28/2021

FIRST ADDITION PLAT BOOK 12 OF LOT 13, SUBMITTER'S ADDITION TO POMPANO BEACH, B.C.R. AND A PORTION OF THE NORTH-EAST QUARTER (Q1/4) OF SECTION 35, TOWNSHIP 48 SOUTH, RANGE 42 EAST, CITY OF POMPANO BEACH, BROWARD COUNTY, FLORIDA

PORTION OF TRACT TO PLAT OF THE SUBDIVISION OF SECTION 35, TOWNSHIP 48 SOUTH, RANGE 42 EAST, CITY OF POMPANO BEACH, BROWARD COUNTY RECORDS

PORTION OF TRACT TO PLAT OF THE SUBDIVISION OF SECTION 35, TOWNSHIP 48 SOUTH, RANGE 42 EAST, CITY OF POMPANO BEACH, BROWARD COUNTY RECORDS

PORTION OF TRACT TO PLAT OF THE SUBDIVISION OF SECTION 35, TOWNSHIP 48 SOUTH, RANGE 42 EAST, CITY OF POMPANO BEACH, BROWARD COUNTY RECORDS

PORTION OF TRACT TO PLAT OF THE SUBDIVISION OF SECTION 35, TOWNSHIP 48 SOUTH, RANGE 42 EAST, CITY OF POMPANO BEACH, BROWARD COUNTY RECORDS

PORTION OF TRACT TO PLAT OF THE SUBDIVISION OF SECTION 35, TOWNSHIP 48 SOUTH, RANGE 42 EAST, CITY OF POMPANO BEACH, BROWARD COUNTY RECORDS

PORTION OF TRACT TO PLAT OF THE SUBDIVISION OF SECTION 35, TOWNSHIP 48 SOUTH, RANGE 42 EAST, CITY OF POMPANO BEACH, BROWARD COUNTY RECORDS

PORTION OF TRACT TO PLAT OF THE SUBDIVISION OF SECTION 35, TOWNSHIP 48 SOUTH, RANGE 42 EAST, CITY OF POMPANO BEACH, BROWARD COUNTY RECORDS

PORTION OF TRACT TO PLAT OF THE SUBDIVISION OF SECTION 35, TOWNSHIP 48 SOUTH, RANGE 42 EAST, CITY OF POMPANO BEACH, BROWARD COUNTY RECORDS

PORTION OF TRACT TO PLAT OF THE SUBDIVISION OF SECTION 35, TOWNSHIP 48 SOUTH, RANGE 42 EAST, CITY OF POMPANO BEACH, BROWARD COUNTY RECORDS

PORTION OF TRACT TO PLAT OF THE SUBDIVISION OF SECTION 35, TOWNSHIP 48 SOUTH, RANGE 42 EAST, CITY OF POMPANO BEACH, BROWARD COUNTY RECORDS

PORTION OF TRACT TO PLAT OF THE SUBDIVISION OF SECTION 35, TOWNSHIP 48 SOUTH, RANGE 42 EAST, CITY OF POMPANO BEACH, BROWARD COUNTY RECORDS

PORTION OF TRACT TO PLAT OF THE SUBDIVISION OF SECTION 35, TOWNSHIP 48 SOUTH, RANGE 42 EAST, CITY OF POMPANO BEACH, BROWARD COUNTY RECORDS

PORTION OF TRACT TO PLAT OF THE SUBDIVISION OF SECTION 35, TOWNSHIP 48 SOUTH, RANGE 42 EAST, CITY OF POMPANO BEACH, BROWARD COUNTY RECORDS

LOTS 1, 2, 3, 6, THRU 12 & EAST 1/2 OF LOT 13, SWMPRTS. ADDITION TO POMPANO THE FIRST ADDITION, PLAT BOOK 10 PAGE 67, B.C.R. AND A PORTION OF THE NORTHEAST ONE-QUARTER (NE 1/4) OF SECTION 35, TOWNSHIP 48 SOUTH, RANGE 42 EAST, CITY OF POMPANO BEACH, BROWARD COUNTY, FLORIDA

EMAIL: mail@KEITHteam.com LB NO. 6860
(954) 788-3400



P&Z
PZ21-18000001
4/28/2021